

ASI makes DIY light sheet easy easier



jon@asiimaging.com

#LSFM18 Tecno-bite

Spectrum of light sheet solutions

Physicists

Biologists

Thorlabs

Zeiss, Leica

Luxendo, LaVision

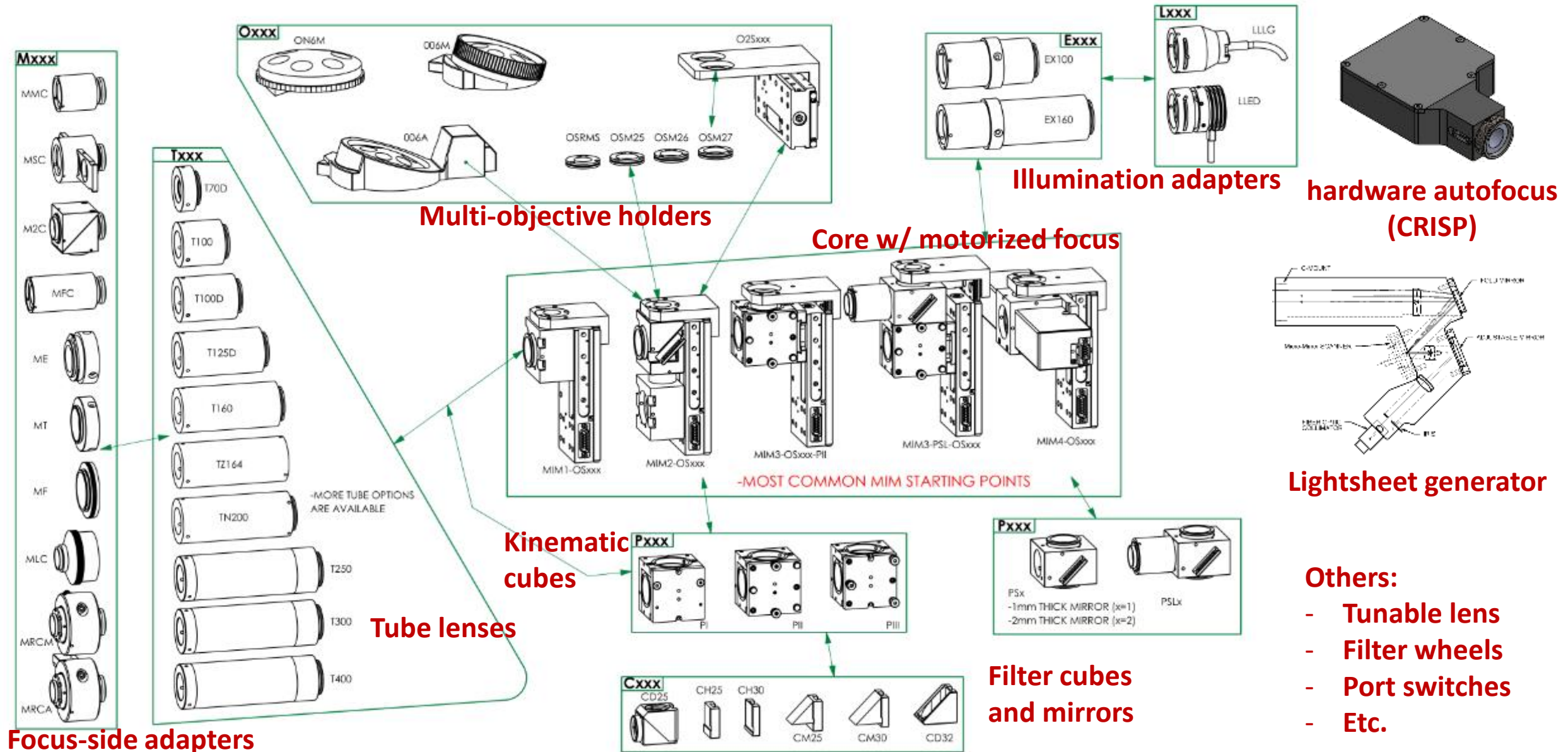
3i, PhaseView

ASI

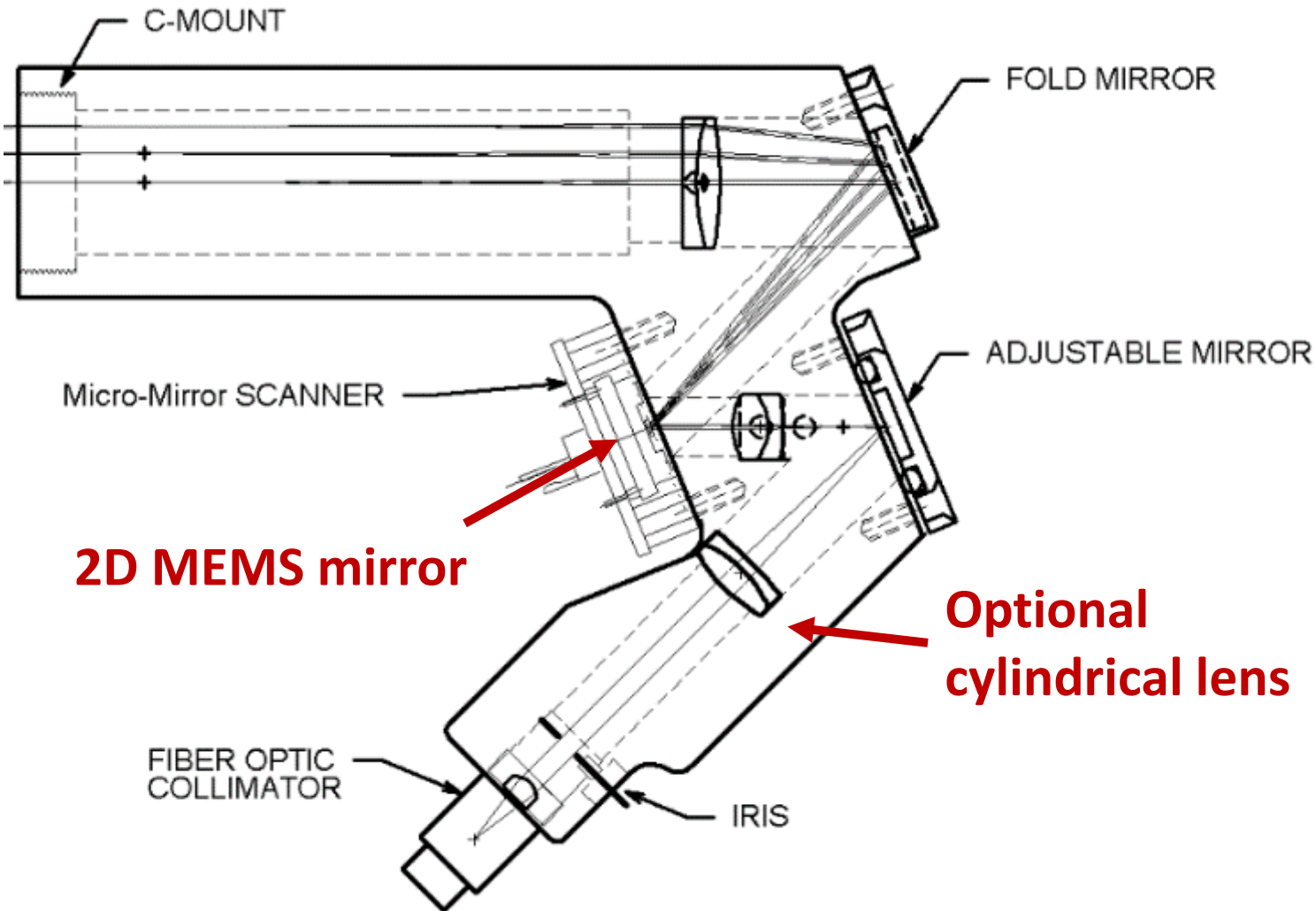
Challenges for DIY light sheet

- Assemble and align components
- Hardware synchronization
- Acquisition software
- Modify as required
- Replicate for your friends

Modular microscopes



Light Sheet Components



**~17x, NA ~0.4, 12mm WD
multi-immersion
chemically resistant**

Synchronization

Light sheet, stages and/or XY stage, cameras, lasers, tunable lenses, etc. must be tightly synchronized → **hardware synchronization**

Modular controller
Internal TTL triggering



Physicists

**DAC cards,
bespoke control**

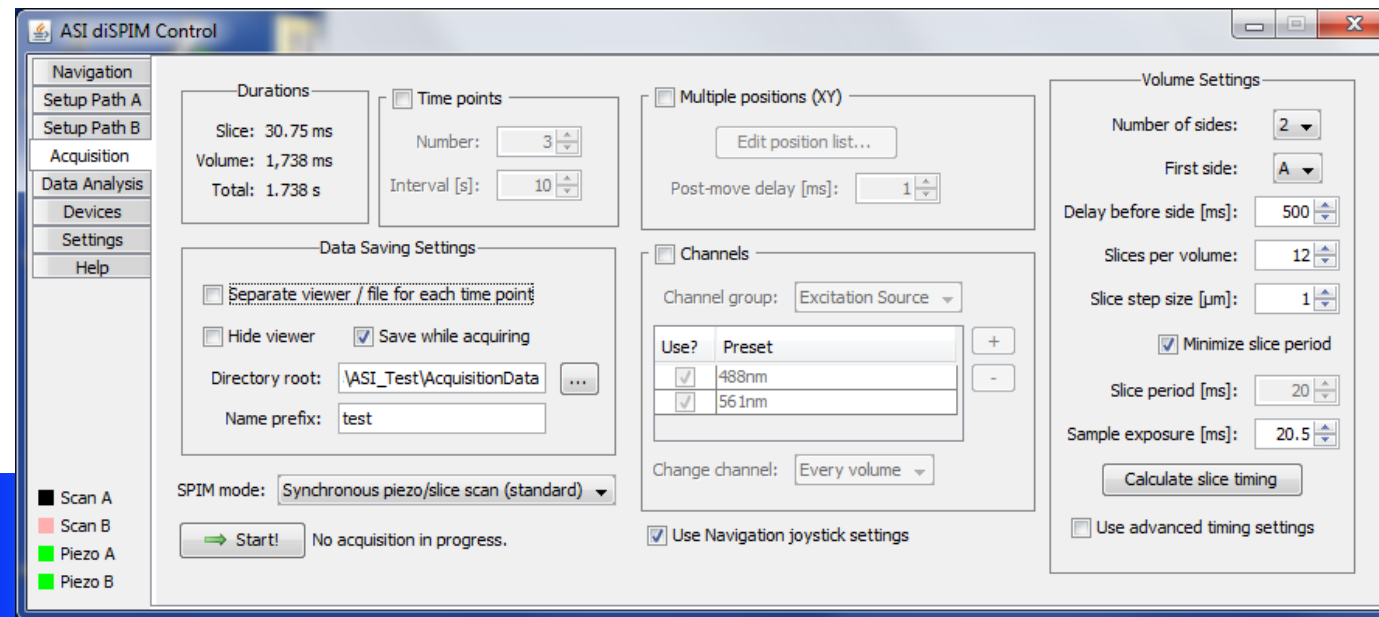
Biologists

**Black
box**

Acquisition Software

Live view for alignment
Configure acquisition
Save images with metadata
Etc.

Micro-Manager plugin
Free and open source



Physicists

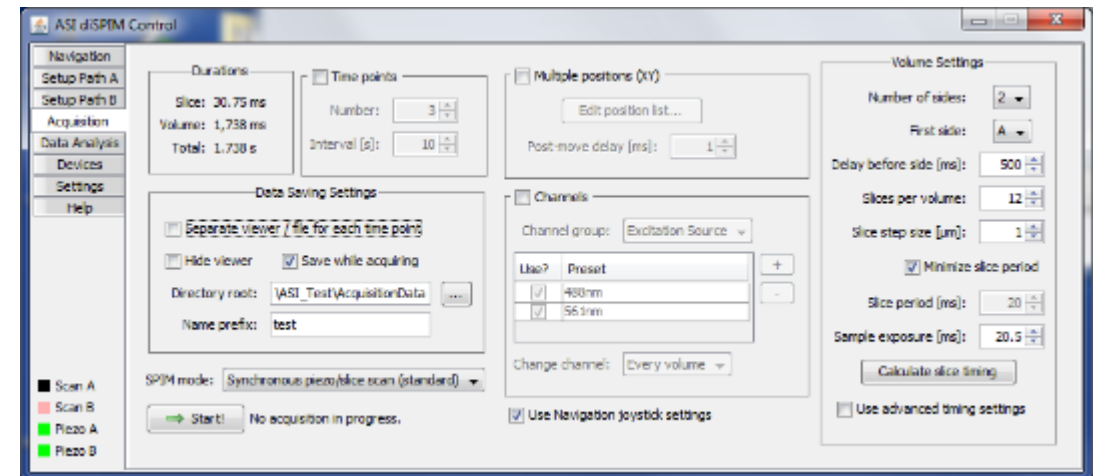
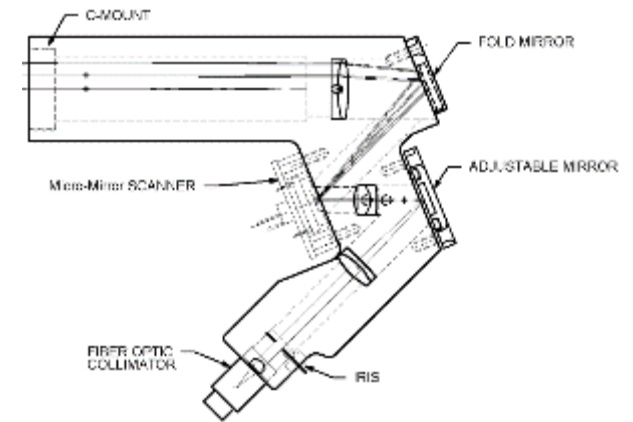
Biologists

Custom
LabView/Matlab

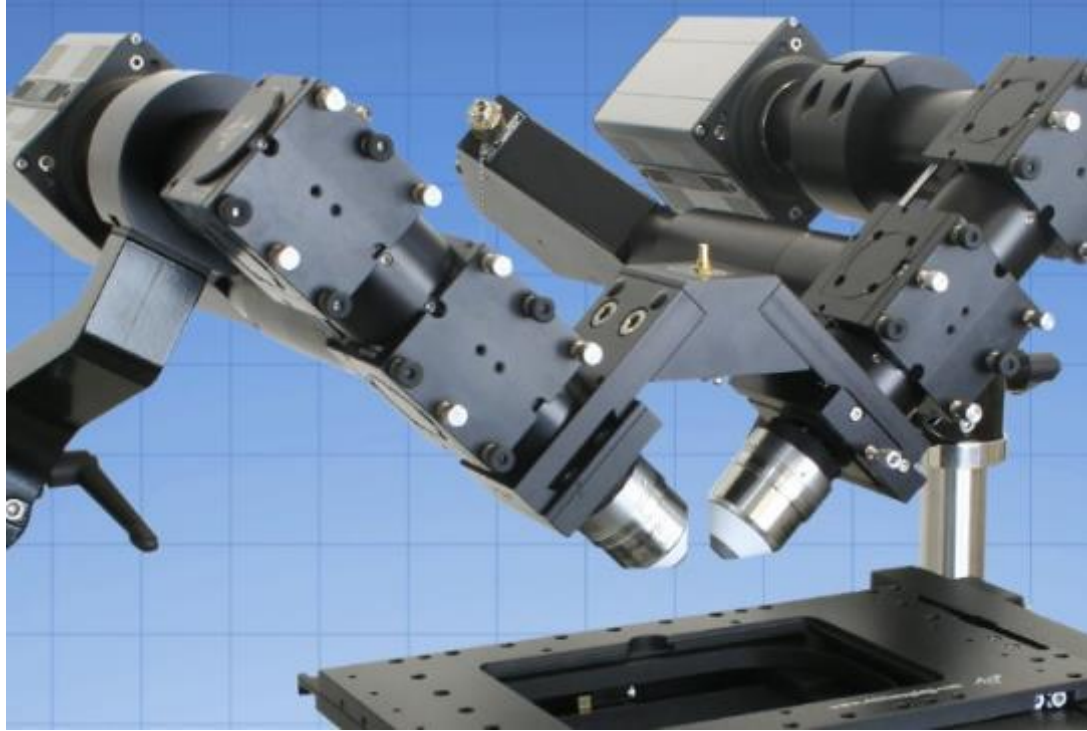
\$\$\$\$
Proprietary

Challenges Solutions for DIY light sheet

- Assemble and align components
- Hardware synchronization
- Acquisition software
- Modify as required
- Replicate for your friends



Let's talk!



ct-dSPIM in
basement U47

jon@asiimaging.com

Physicists

Biologists

Are you here?